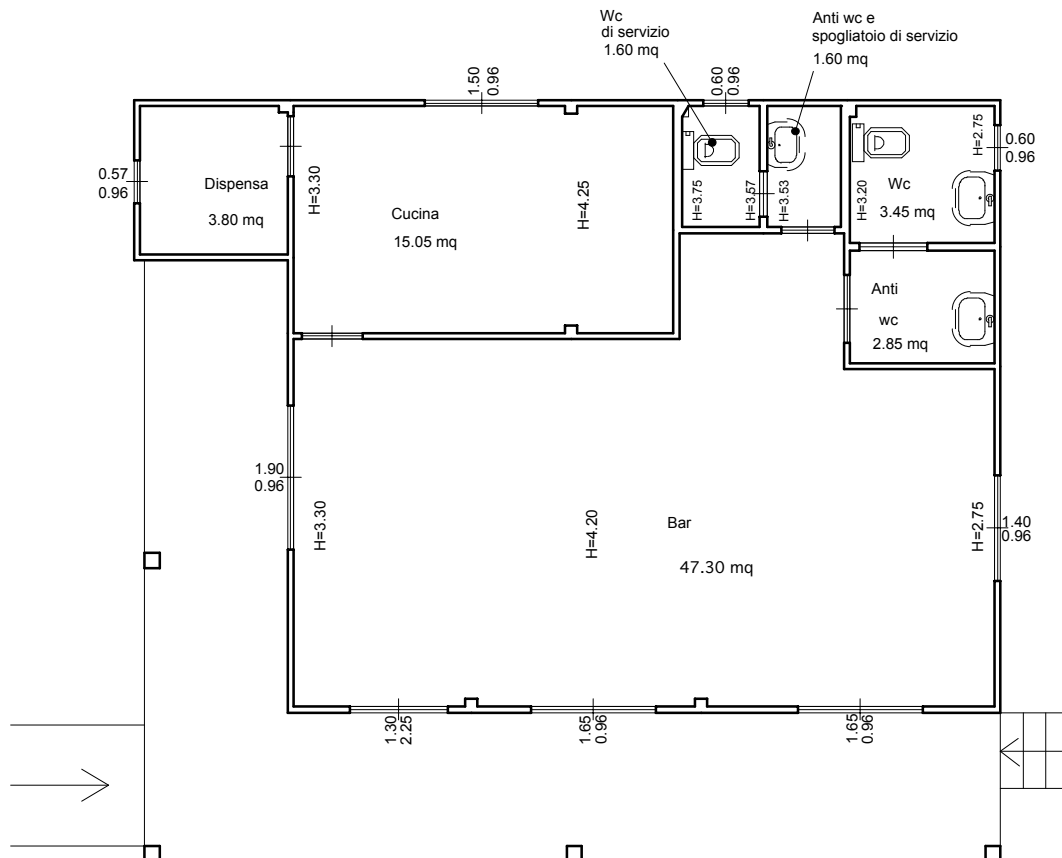


## PLANIMETRIA STRUTTURA RICETTIVA PRINCIPALE

PLANIMETRIA LOCALI BAR-RISTORANTE

Scala 1:100



### RAPPORTI AEREO-ILLUMINANTI LOCALE BAR

Sup. utile locali= 47,30 mq  
 Sup. minima illuminante=1/8 Sup. locali=47,30/8=5,91 mq.  
 Sup. illuminante=(1,00x0,96)+(1,65x0,96)+(1,65x0,96)+(1,40x0,96)+  
 (1,45x1,30)=7,35 mq > 5,91 mq

### RAPPORTI AEREO-ILLUMINANTI LOCALE CUCINA

Sup. utile locali= 15,05 mq  
 Sup. minima illuminante=1/8 Sup. locali=15,05/8=1,88 mq.  
 Sup. illuminante= 1,50x0,96=1,44 mq < 1,88 mq